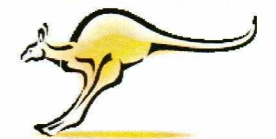
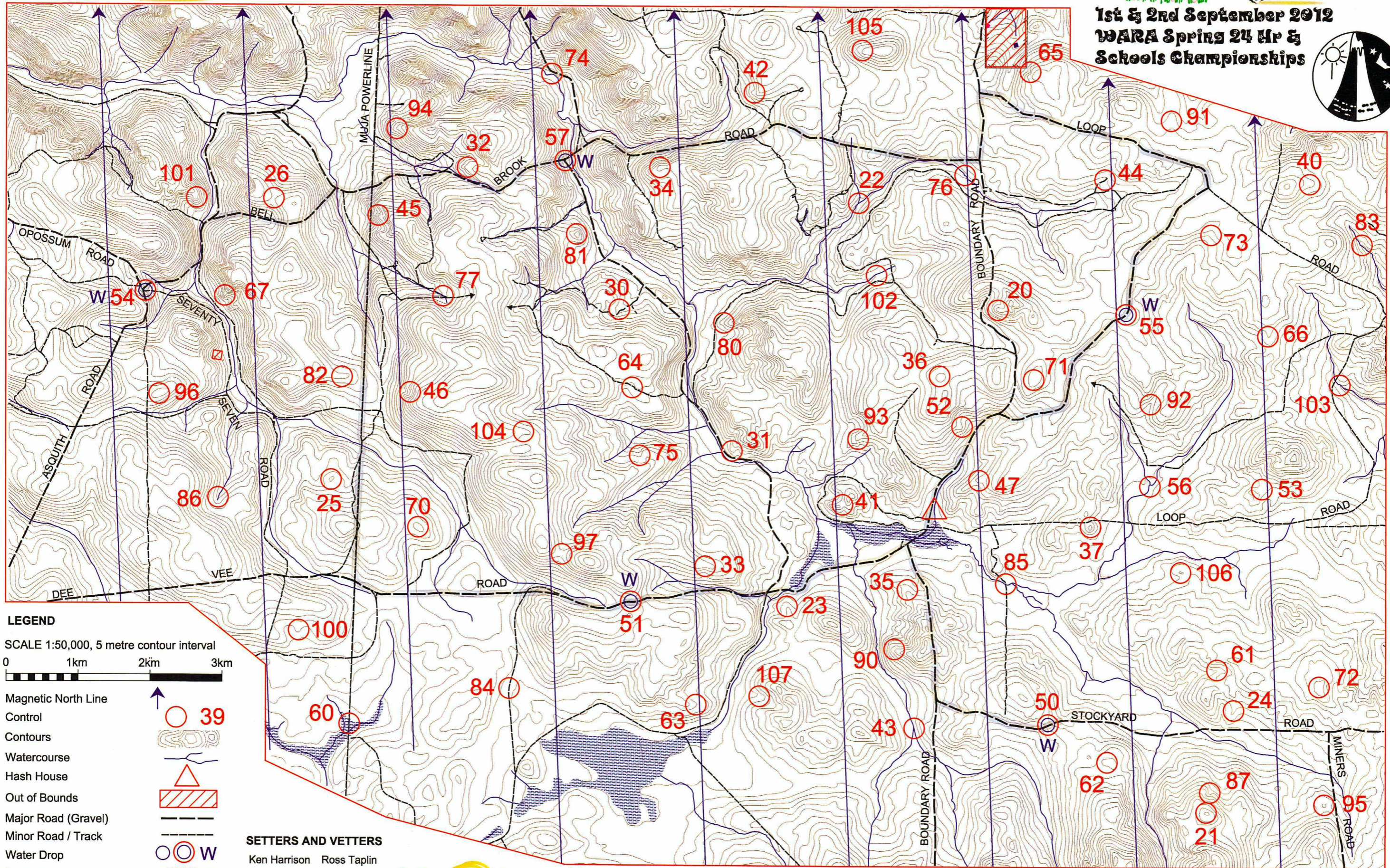
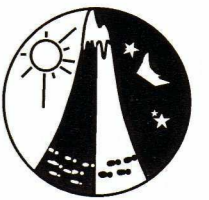


# The Spring into Spring Rogaine



1st & 2nd September 2012  
WARA Spring 24 Hr &  
Schools Championships



### LEGEND

SCALE 1:50,000, 5 metre contour interval  
0 1km 2km 3km

- Magnetic North Line
- Control
- Contours
- Watercourse
- Hash House
- Out of Bounds
- Major Road (Gravel)
- Minor Road / Track
- Water Drop
- Swamp
- Patrolled Road

### SETTERS AND VETTERS

Ken Harrison	Ross Taplin
Paul Harrison	Hugh Taplin
Shane Lewis	Mark Imbert



Department of Sport and Recreation



This map was produced using OCAD. Data supplied by Landgate and used under copy licence 393/93. Possession of this map does not give right of entry to this area.



# Spring into Spring

## Control Descriptions



No.	Description	Points
20	A knoll	20
21	The knoll	20
22	Northern edge of a 20m by 30m rock surface	20
23	The spur	20
24	The small spur	20
25	The broad knoll	20
26	The saddle	20
30	The gully	30
31	The spur	30
32	The spur	30
33	The spur	30
34	The spur	30
35	The spur	30
36	The broad knoll	30
37	The knoll	30
40	The broad spur	40
41	The saddle	40
42	The spur	40
43	The watercourse junction	40
44	The gully	40
45	The spur	40
46	The gully	40
47	The spur	40
50	The saddle WATER	50
51	The saddle WATER	50
52	The spur	50
53	The broad saddle	50
54	The road - track junction WATER	50
55	The track bend on the broad spur WATER	50
56	The watercourse	50
57	The road junction WATER	50
60	The pylon, 70m @ 320 degrees	60
61	The gully	60
62	The broad knoll	60
63	The broad spur	60

No.	Description	Points
64	The track	60
65	The gully	60
66	The broad spur	60
67	The spur	60
70	The broad knoll	70
71	The broad knoll	70
72	The broad knoll	70
73	The gully	70
74	The watercourse	70
75	The gully	70
76	The watercourse	70
77	The watercourse	70
80	The spur	80
81	The knoll	80
82	The spur	80
83	The watercourse	80
84	The track bend	80
85	The track - watercourse junction	80
86	The gully	80
87	The gully	80
90	The spur	90
91	The broad spur	90
92	The gully	90
93	The rocky spur	90
94	The spur	90
95	The knoll	90
96	The broad knoll	90
97	The saddle	90
100	The small spur, on an overgrown EW track	100
101	A knoll	100
102	The watercourse	100
103	"The watercourse, NW edge of a rock surface"	100
104	The spur	100
105	The spur	100
106	The knoll	100
107	The gully	100

Additional information
<p><b>Key event times</b></p> <p>Map collection from 0800 Saturday            Novice briefing at 1000 Saturday            Event briefing at 1145 Saturday</p> <p>Event commences at 1200 Saturday            Event finishes at 1200 Sunday</p> <p>Hash house opens at 1600 Saturday            Hash house closes at 1300 Sunday</p> <p>Fruit may be available at water drops from 1600 on Saturday</p>
<p><b>Astronomical data</b></p> <p>Sunset: Saturday 1757            Sunrise: Sunday 0702</p> <p>Moonrise: Saturday 1848            Moonset: Sunday 0702</p> <p>Civil Twilight: Saturday 1822            Sunday 0621</p>
<p><b>Scoring</b></p> <p>Number of controls - 71            Total points available - 4300</p>
<p><b>Penalties</b></p> <p>10 points per minute late or part thereof            Disqualification if more than 30 minutes late</p>